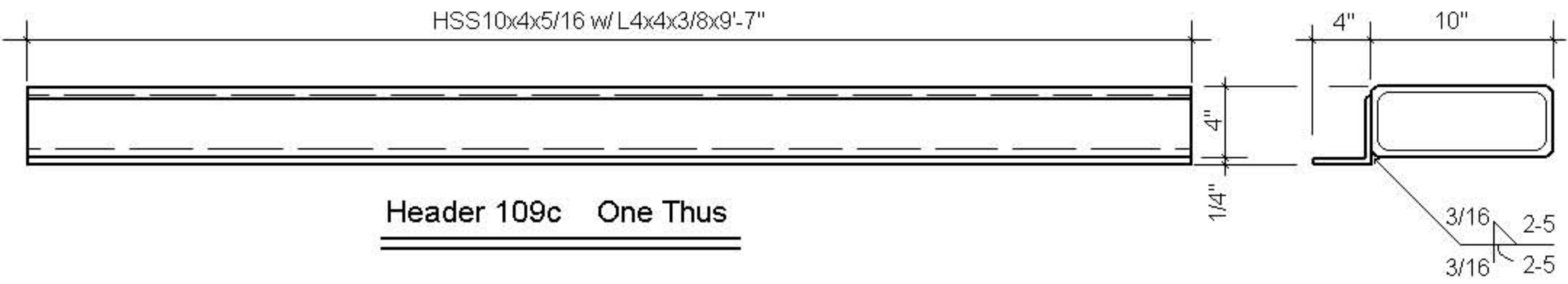
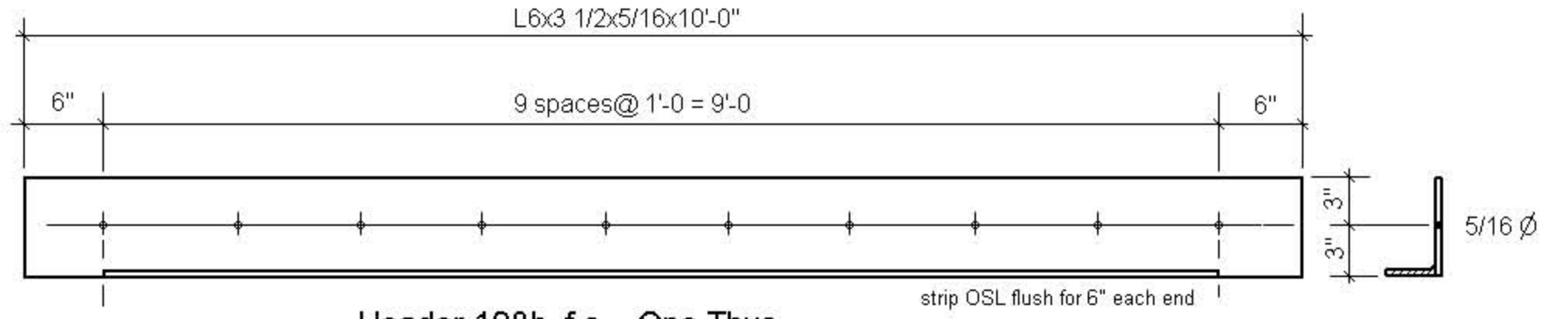


HSS10x4x5/16 w/ L4x4x3/8x9'-7"



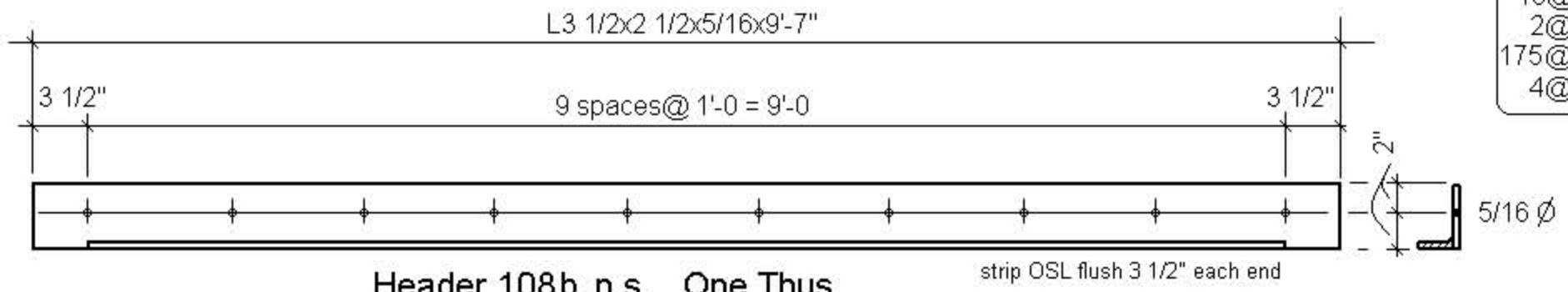
Header 109c One Thus

L6x3 1/2x5/16x10'-0"



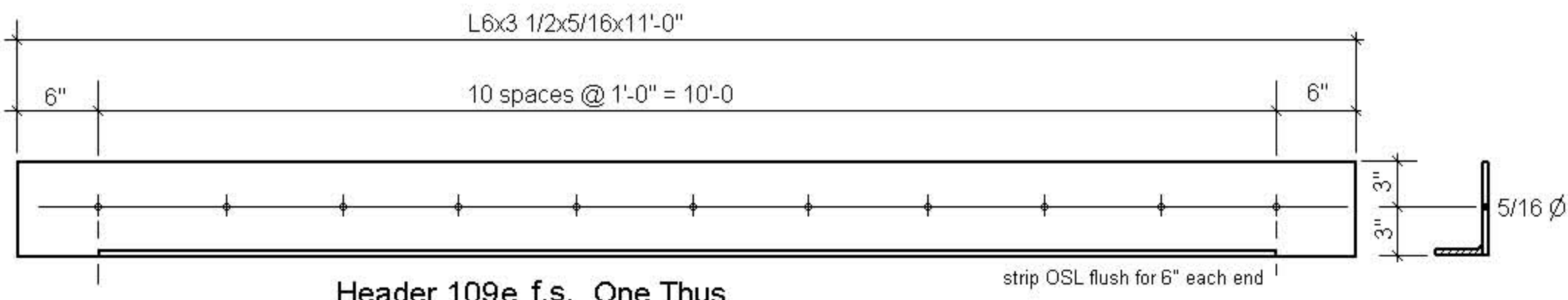
Header 108b f.s. One Thus

L3 1/2x2 1/2x5/16x9'-7"



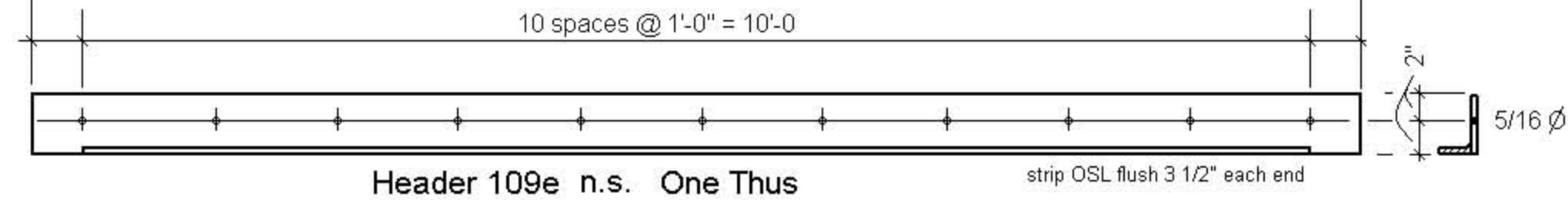
Header 108b n.s. One Thus

L6x3 1/2x5/16x11'-0"



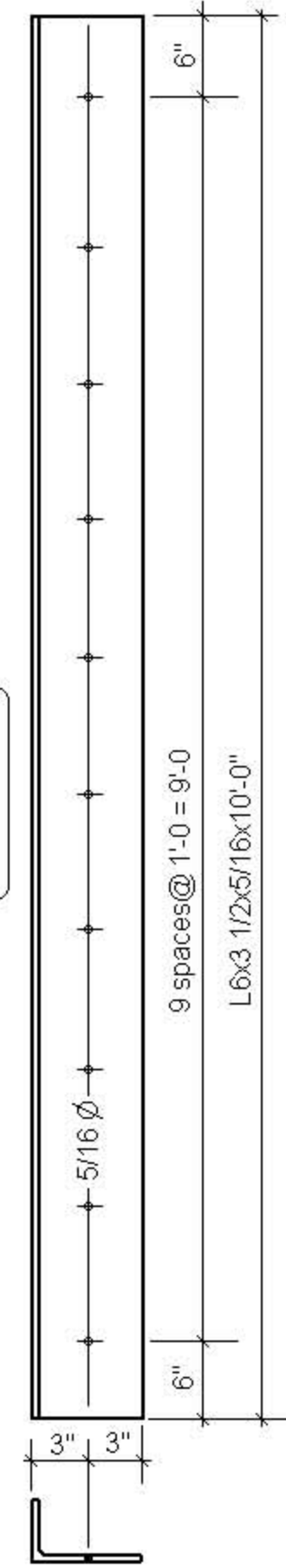
Header 109e f.s. One Thus

10 spaces @ 1'-0" = 10'-0"

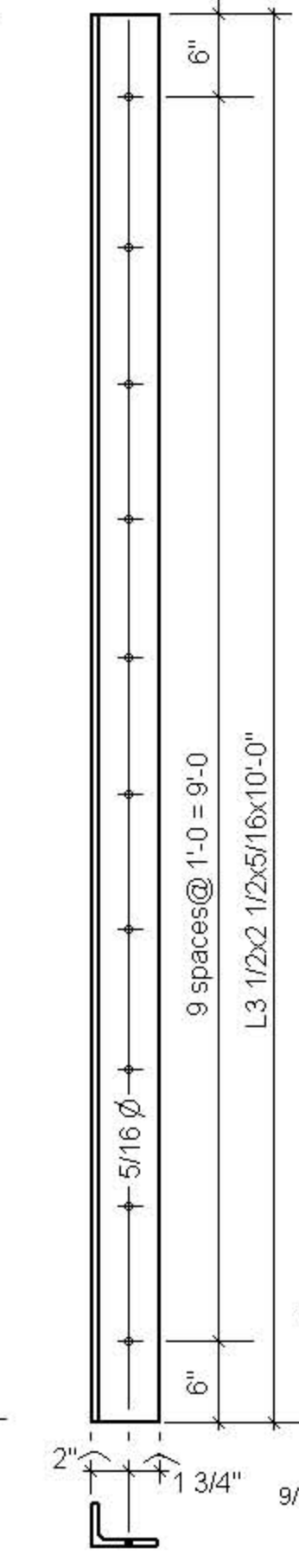


Header 109e n.s. One Thus

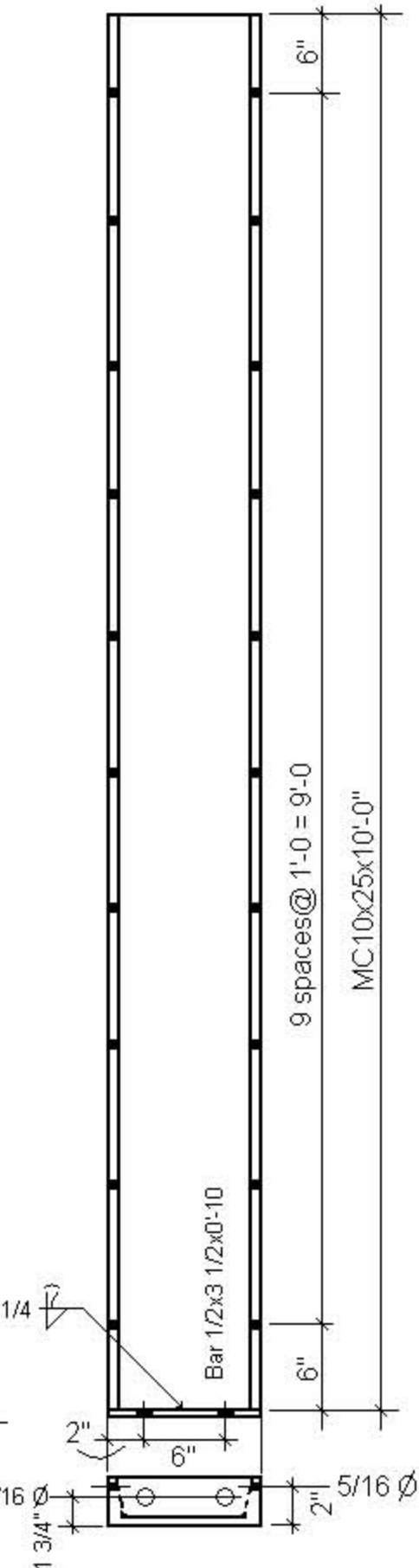
Plain Material
 10@ Bollard 4" std. pipe x 7'-0
 2@ Bollard 6" std. pipe x 7'-0
 175@ #12 TEKs x 1 1/4
 4@ 1/2x3 exp anchors



Angle Jam 108/109 f.s. Four Thus



Angle Jam 108/109 n.s. Four Thus



Channel Jam 109c Two Thus

FOR CONSTRUCTION DATE
 APPROVAL DATE 7-1-11



WELD 3/16 UNO SHOP COAT PRIMER	
JOB NAME	Northern Tool & Equipment
ADDRESS	12120 W. 95th St. Lenexa, Ks. 66215
GENERAL	Outland Builders
JOB #	11-969
JRF	
SHEET #	1